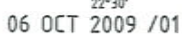


STANDARD DEPARTURE CHART -  
INSTRUMENT (SID) - ICAO

ATIS 136.125

TWR	136.275	118.625		
APP	128.950			
ACC	134.150	125.200	134.325	133.725





AIP  
GREECE

## **ATHINAI / ELEFThERIOS VENIZELOS AIRPORT**

### **SIDs RWY 21R SAT VOR/DME**

**NEVRA 2G, KEPIR 1G, VARIX 1G, GENDO 1G, SOREV 1G, KEA 1G, VELOP 2G, ASTOV 1G, NEMES 3G,  
RILIN 2G, PIKAD 2G, RIMAX 1G, ABLON 1G.**

#### **GENERAL**

1. IAS MAX 210 KT for initial turns
2. Bank Angle 15 deg
3. PDG: 5% (304 FT/NM)
4. Initial Clearance Limit 5000 FT (QNH)

When for these SIDs an altitude higher than the transition altitude is designated, then ATC unit shall specify an equivalent flight level.

#### **NEVRA 2G**

Climb on runway track 214 deg to SAT VOR or 700 ft (QNH), whichever is later. Then intercept and follow RADIAL 221 SAT to RADIAL 221 SAT / 15 DME Fix not above 3000 FT (QNH). At RADIAL 221 SAT / 15 DME Fix turn left, intercept and follow RADIAL 280 KEA to KEA VOR maintaining 3000 FT (QNH) until RADIAL 280 KEA / 10 DME Fix, then climb at 5000 FT (QNH) to reach KEA VOR. At KEA VOR turn left, intercept and follow RADIAL 017 KEA to KRO VOR. After KRO intercept and follow RADIAL 014 KRO to NEVRA. Cross NEVRA at 9000 FT (QNH) or above.

#### **KEPIR 1G**

Climb on runway track 214 deg to SAT VOR or 700 ft (QNH), whichever is later. Then intercept and follow RADIAL 221 SAT to RADIAL 221 SAT / 15 DME Fix not above 3000 FT (QNH). At RADIAL 221 SAT / 15 DME Fix turn left, intercept and follow RADIAL 280 KEA to KEA VOR maintaining 3000 FT (QNH) until RADIAL 280 KEA / 10 DME Fix, then climb at 5000 FT (QNH) to reach KEA VOR. At KEA VOR turn left, intercept and follow RADIAL 017 KEA to KRO VOR. After KRO intercept and follow RADIAL 033 KRO to KEPIR. Cross KEPIR at 9000 FT (QNH) or above.

#### **VARIX 1G**

Climb on runway track 214 deg to SAT VOR or 700 ft (QNH), whichever is later. Then intercept and follow RADIAL 221 SAT to RADIAL 221 SAT / 15 DME Fix not above 3000 FT (QNH). At RADIAL 221 SAT / 15 DME Fix turn left, intercept and follow RADIAL 280 KEA to KEA VOR maintaining 3000 FT (QNH) until RADIAL 280 KEA / 10 DME Fix, then climb at 5000 FT (QNH) to reach KEA VOR. After KEA VOR intercept and follow RADIAL 105 KEA to VARIX. Cross VARIX at 9000 FT (QNH) or above.

#### **GENDO 1G**

Climb on runway track 214 deg to SAT VOR or 700 ft (QNH), whichever is later. Then intercept and follow RADIAL 221 SAT to RADIAL 221 SAT / 15 DME Fix not above 3000 FT (QNH). At RADIAL 221 SAT / 15 DME Fix turn left, intercept and follow RADIAL 280 KEA to KEA VOR maintaining 3000 FT (QNH) until RADIAL 280 KEA / 10 DME Fix, then climb at 5000 FT (QNH) to reach KEA VOR. After KEA VOR turn right, intercept and follow RADIAL 145 KEA to GENDO. Arrange to pass RADIAL 145 KEA / 28.8 DME at FL 100 or above.

#### **SOREV 1G**

Climb on runway track 214 deg to SAT VOR or 700 ft (QNH), whichever is later. Then intercept and follow RADIAL 221 SAT to RADIAL 221 SAT / 15 DME Fix not above 3000 FT (QNH). At RADIAL 221 SAT / 15 DME Fix turn left, intercept and follow RADIAL 280 KEA to KEA VOR maintaining 3000 FT (QNH) until RADIAL 280 KEA / 10 DME Fix, then climb at 5000 FT (QNH) to reach KEA VOR. After KEA VOR turn right, intercept and follow RADIAL 165 KEA to SOREV. Cross SOREV at 9000 FT (QNH) or above.

#### **KEA 1G**

Climb on runway track 214 deg to SAT VOR or 700 ft (QNH), whichever is later. Then intercept and follow RADIAL 221 SAT to RADIAL 221 SAT / 15 DME Fix not above 3000 FT (QNH). At RADIAL 221 SAT / 15 DME Fix turn left, intercept and follow RADIAL 280 KEA to KEA VOR maintaining 3000 FT (QNH) until RADIAL 280 KEA / 10 DME Fix. Climb at 5000 FT (QNH) to reach KEA VOR and then as directed by ATC.

28 JUNE 2012

#### **VELOP 2G**

Climb on runway track 214 deg to SAT VOR or 700 ft (QNH), whichever is later. Then intercept and follow RADIAL 221 SAT. At 5000 FT (QNH) turn right and proceed to DDM VOR or as instructed by ATC. After DDM VOR turn left, intercept and follow RADIAL 167 DDM to VELOP. Cross VELOP at 9000 FT (QNH) or above.

#### **ASTOV 1G**

Climb on runway track 214 deg to SAT VOR or 700 ft (QNH), whichever is later. Then intercept and follow RADIAL 221 SAT. At 5000 FT (QNH) turn right and proceed to DDM VOR or as instructed by ATC. After DDM VOR intercept and follow RADIAL 261 DDM to ASTOV. Arrange to be 9000 FT (QNH) or above by RADIAL 261 DDM / 18 DME Fix. Cross ASTOV at FL 100 or above.

#### **NEMES 3G**

Climb on runway track 214 deg to SAT VOR or 700 ft (QNH), whichever is later. Then intercept and follow RADIAL 221 SAT. At 5000 FT (QNH) turn right and proceed to DDM VOR or as instructed by ATC. After DDM VOR intercept and follow RADIAL 292 DDM to NEMES. Cross NEMES at FL 100 or above.

#### **RILIN 2G**

Climb on runway track 214 deg to SAT VOR or 700 ft (QNH), whichever is later. Then intercept and follow RADIAL 221 SAT to RADIAL 221 SAT / 9 DME Fix. At RADIAL 221 SAT / 9 DME Fix turn right to EGN NDB not above 5000 FT (QNH). At EGN NDB turn right and follow BEARING 291/KOR to KOR NDB. After KOR follow BEARING 276 KOR to RILIN. Cross RILIN at FL 100 or above.

#### **PIKAD 2G**

Climb on runway track 214 deg to SAT VOR or 700 ft (QNH), whichever is later. Then intercept and follow RADIAL 221 SAT to RADIAL 221 SAT / 9 DME Fix. At RADIAL 221 SAT / 9 DME Fix turn right to EGN NDB not above 5000 FT (QNH). At EGN NDB turn right and follow BEARING 291/KOR to KOR NDB. After KOR follow BEARING 302 KOR to PIKAD. Cross PIKAD at FL 100 or above.

#### **RIMAX 1G**

Climb on runway track 214 deg to SAT VOR or 700 ft (QNH), whichever is later. Then intercept and follow RADIAL 221 SAT to RADIAL 221 SAT / 9 DME Fix. At RADIAL 221 SAT / 9 DME Fix turn right to EGN NDB not above 5000 FT (QNH). At EGN NDB turn right and follow BEARING 291/KOR to KOR NDB. After KOR follow BEARING 315 KOR to RIMAX. Cross RIMAX at FL 120 or above.

#### **ABLON 1G**

Climb on runway track 214 deg to SAT VOR or 700 ft (QNH), whichever is later. Then intercept and follow RADIAL 221 SAT to RADIAL 221 SAT / 9 DME Fix. At RADIAL 221 SAT / 9 DME Fix turn right to EGN NDB not above 5000 FT (QNH). At EGN NDB turn right and follow BEARING 029 EGN to ABLON. Cross ABLON at FL 100 or above.